



---

Jamie Whittall  
Geospatial Design

# Capabilities - GIS, Autocad and Site Planning

---

## Introduction:

We specialise in harnessing the capabilities of AutoCAD and Geographic Information Systems (GIS) to transform concepts into reality and spatial data into actionable insights. Our commitment to excellence, attention to detail, and years of experience in these fields makes us your trusted partner for all your drafting, design, and geospatial needs.

With a proven track record of delivering innovative solutions, we stand ready to support your projects with precision and professionalism. Our capabilities extend across a wide range of industries, including development planning, sustainable infrastructure and transport planning, and we are dedicated to providing a high quality service.

Discover how we can elevate your projects with precision, innovation, and efficiency. We look forward to the opportunity to collaborate with you on your next endeavour.



# Services At a Glance

## GIS



Online webmaps



Customer facing mapping interfaces



Geospatial analysis



Simple or complex visual maps



Vehicle routing analysis



Vehicle, walk and cycle catchments

## AutoCAD



Site layout design input



Swept Path Analysis



Access design



Car and HGV parking design



Roundabout design



Visibility splays



# GIS Mapping

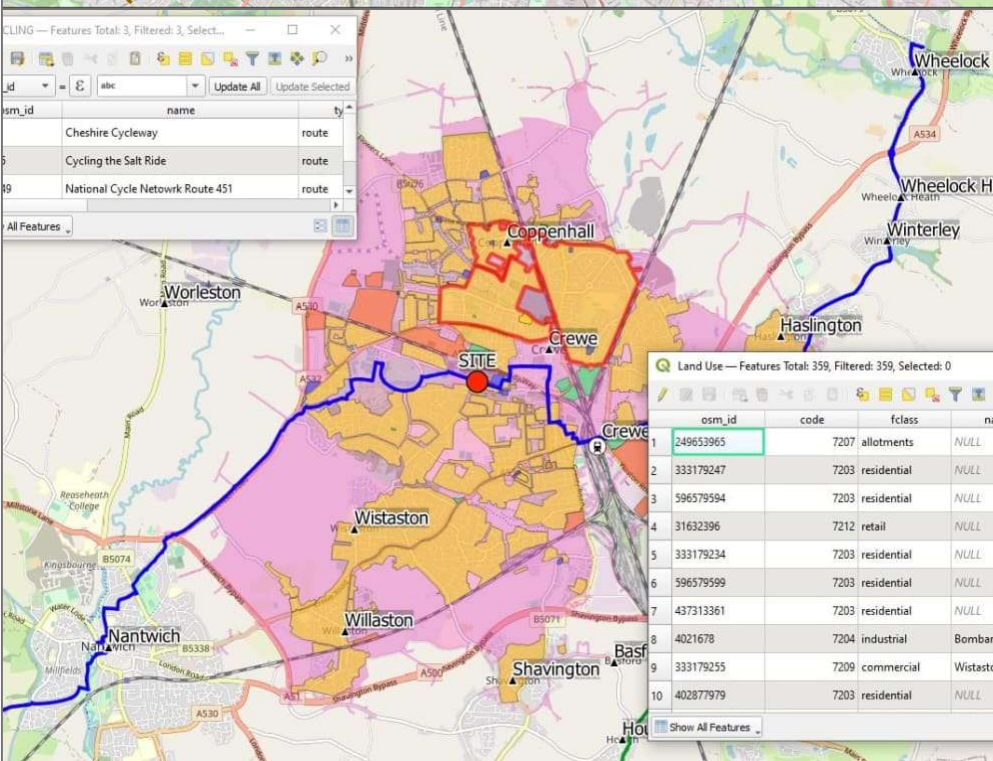
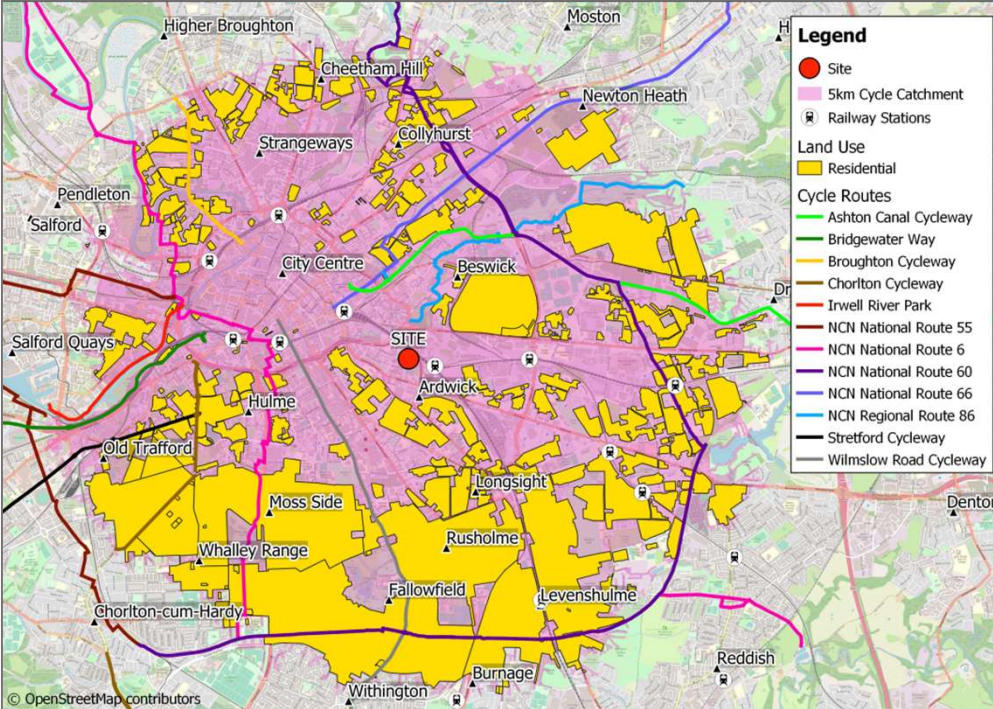
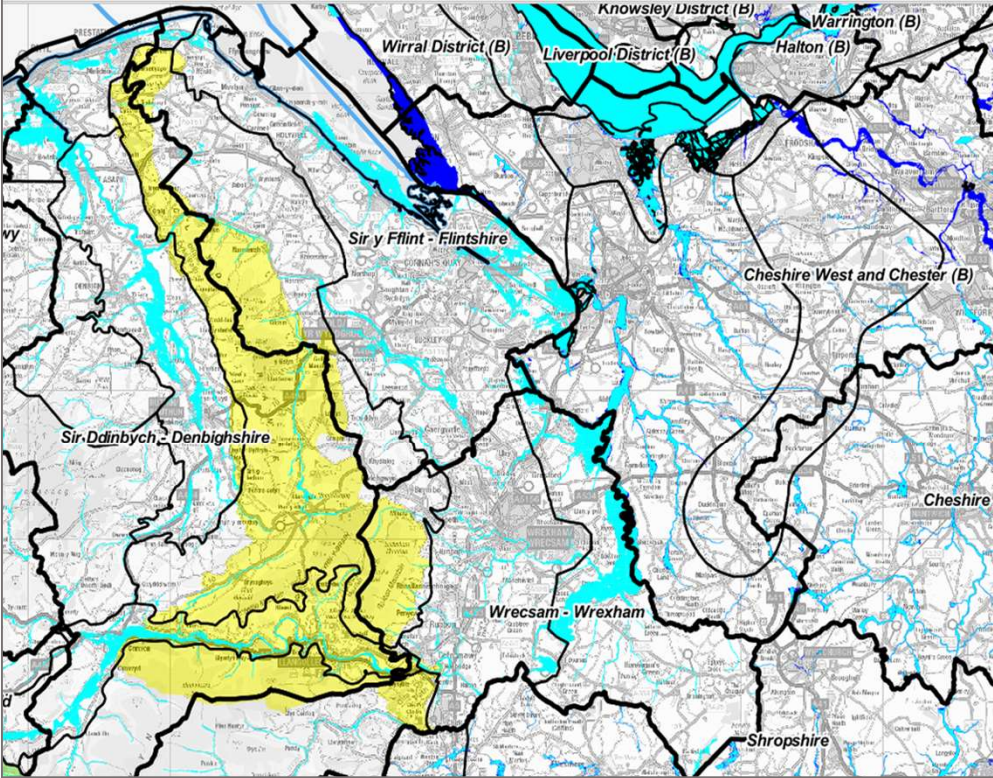
Geographic Information Systems, commonly referred to as GIS, are powerful tools used to capture, store, analyse, and visualise geographic data. At its core, GIS is a system designed to work with all types of geographical or spatial information. It allows users to understand and interpret data within a geographic context.

## Accessibility Catchments

By analysing transport networks, land use patterns, and geographical data, catchments (isochrones) provide a clear understanding of the areas accessible within a specific distance or time by car, cycling or walking.

Each catchment showcases the connectivity of different regions, highlighting the potential opportunities and challenges associated with specific sites. These maps serve as essential tools for assessing the viability and feasibility of infrastructure development, urban design, and transportation planning projects.

Whether you're a city planner seeking to enhance cycling infrastructure, a property developer evaluating the walkability of a neighbourhood, or a local authority aiming to promote sustainable transportation, these catchment maps offer invaluable insights into the spatial dynamics of your projects.



Jamie Whittall  
Geospatial Design

(+44)7816 856 720

jamie@geospatialdesign.co.uk

No 4 Rubin Drive, Crewe, Cheshire CW1 3GF

[www.linkedin.com/in/jamie-whittall/](http://www.linkedin.com/in/jamie-whittall/)



## Advantages of GIS

Discover the power of visually captivating mapping, meticulously crafted by a skilled GIS expert.

Utilising cutting-edge Geographic Information Systems (GIS) technology and advanced spatial analysis techniques, our maps offer valuable insights for development planners, business owners, and local authorities

GIS is essential in today's data-driven world. Among the versatile tools at our disposal, GIS stands out for a multitude of reasons. GIS represent a transformative tool in the realm of data management, analysis, and visualisation, offering a multitude of benefits across various sectors.

GIS empowers organisations and individuals with the ability to explore, analyse, and visualise geographic data, resulting in more informed decisions, efficient processes, and a deeper understanding of our complex world. Its versatility and applicability across sectors make it an invaluable tool in today's data-driven society.

# Online Mapping

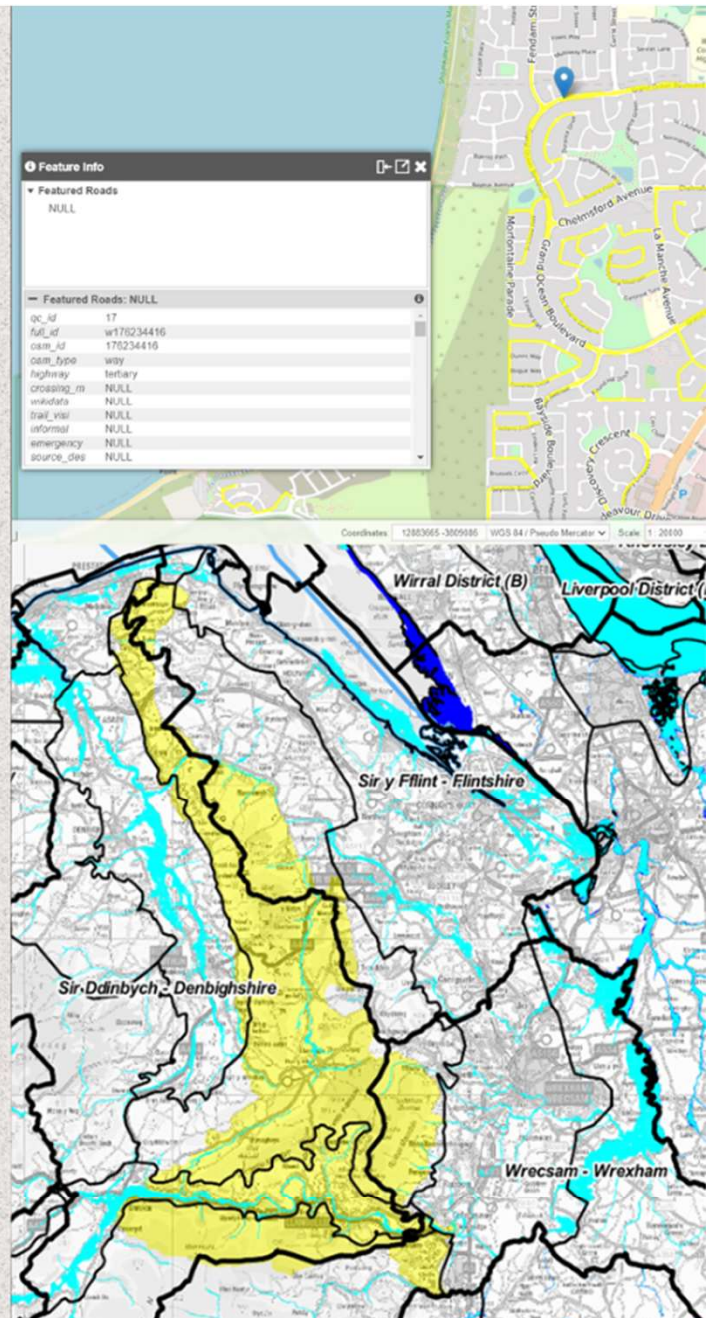
## Hosting Maps In the Cloud

We excel in creating customized maps that provide valuable insights and support decision-making processes. Our proficiency in Geographic Information Systems (GIS) extends to creating online mapping solutions, hosting and sharing interactive maps online.

We are experienced in creating cloud mapping, utilising a secure and user-friendly cloud-based GIS platform. We can host, manage, and share your maps with ease. Our expertise includes setting up map projects, configuring layers, and ensuring seamless online accessibility.

Features such as zooming, panning, and querying data layers enhance the user experience and facilitate data-driven decision-making.

With our solution, your maps are accessible from anywhere with an internet connection. This remote accessibility facilitates collaboration among team members and stakeholders, allowing them to view and edit maps as needed.



Jamie Whittall  
Geospatial Design



**(+44)7816 856 720**



jamie@geospatialdesign.co.uk



**No 4 Rubin Drive, Crewe, Cheshire CW1 3GF**



[www.linkedin.com/in/jamie-whittall/](http://www.linkedin.com/in/jamie-whittall/)



# QGIS and You

QGIS puts the capabilities of GIS into your hands, enabling dynamic spatial analysis and high-quality mapping solutions. Its intuitive design and suite of tools allows users to conduct detailed assessments, visualise complex data, and produce compelling maps tailored to specific planning contexts.

QGIS stands out as a powerful, open-source, and free-to-use GIS platform, making advanced geospatial technology accessible to a wide range of users without the need for costly licenses. As an open-source tool, QGIS benefits from continuous improvements by a global community of developers and users, ensuring it remains versatile, robust, and up-to-date with the latest advancements in GIS technology.

Its free nature allows organisations, especially small to medium sized consultancies, to harness the full potential of GIS, promoting innovation and collaboration while reducing overhead costs.



## QGIS Instruction

My comprehensive GIS course offers a practical, hands-on introduction to QGIS, designed specifically for professionals in planning and development. My two-day beginner-level course has been crafted to equip participants with essential skills in using QGIS to address real-world planning challenges.

The course covers key topics, such as planning constraint mapping, creating site location plans, and manipulating data, all tailored to the workflows relevant to planning consultancies. Participants engage with real-life examples provided by their own organisation, ensuring that each exercise is directly applicable to their day-to-day work. The format includes interactive exercises, with example data and projects, allowing participants to actively work through each step with guided support.

In addition to learning core QGIS functionality, participants gain the confidence to produce visually engaging, data-driven maps independently.

My training is delivered in person, with the possibility of workshops in multiple locations as needed.



Jamie Whittall  
Geospatial Design



(+44)7816 856 720



[jamie@geospatialdesign.co.uk](mailto:jamie@geospatialdesign.co.uk)



No 4 Rubin Drive, Crewe, Cheshire CW1 3GF



[www.linkedin.com/in/jamie-whittall/](https://www.linkedin.com/in/jamie-whittall/)



# Site Layout Design Input

We are equipped with the skills, knowledge, and experience needed to provide invaluable input into site layout design for planning purposes. Our collaborative approach, working closely with architects, engineers, planners, and other stakeholders, has consistently yielded well-informed and holistic site layout designs that align perfectly with project objectives. These designs form the bedrock upon which successful projects are built, and deserve the utmost care and attention.

In site layout design, precision and detail are paramount. To meet these demands effectively, we harness the power of AutoCAD, a cutting-edge Computer-Aided Design (CAD) software. AutoCAD enables us to create accurate, to-scale layouts with meticulous attention to every element.

## Swept Path Analysis

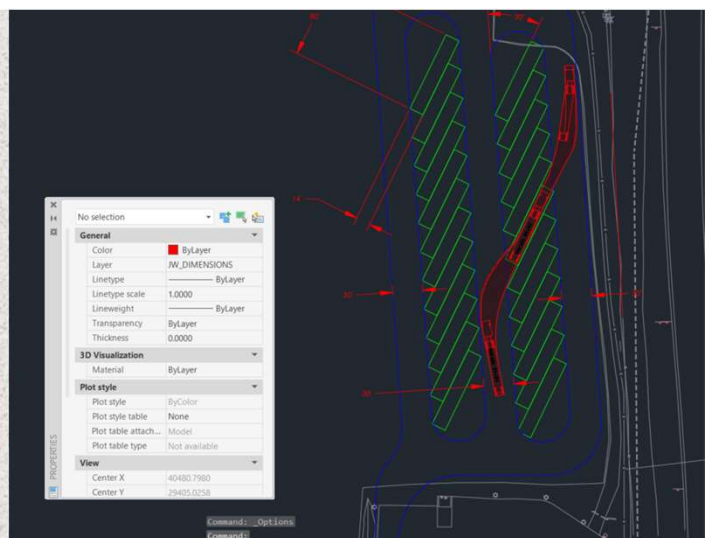
### Design Input

We are specialists in swept path analysis, an essential tool for ensuring the efficient and safe movement of vehicles in various contexts. Our swept path analysis capabilities are founded on a combination of cutting-edge technology, industry knowledge, and a commitment to delivering results that exceed expectations.

#### What is Swept Path Analysis?

Swept Path Analysis is a critical process in transportation and site design that evaluates the path taken by a vehicle as it manoeuvres through a given area. It involves precise measurements of vehicle dimensions, turning radii, and clearances to determine if a particular vehicle can safely navigate a specified route, such as a road, junction, or parking area.

Swept path analysis is not just about compliance; it's about optimizing space, enhancing safety, and ensuring your projects flow seamlessly. It is our mission to provide you with the expertise needed to achieve these goals.



Jamie Whittall  
Geospatial Design



(+44)7816 856 720



[jamie@geospatialdesign.co.uk](mailto:jamie@geospatialdesign.co.uk)



No 4 Rubin Drive, Crewe, Cheshire CW1 3GF



[www.linkedin.com/in/jamie-whittall/](https://www.linkedin.com/in/jamie-whittall/)